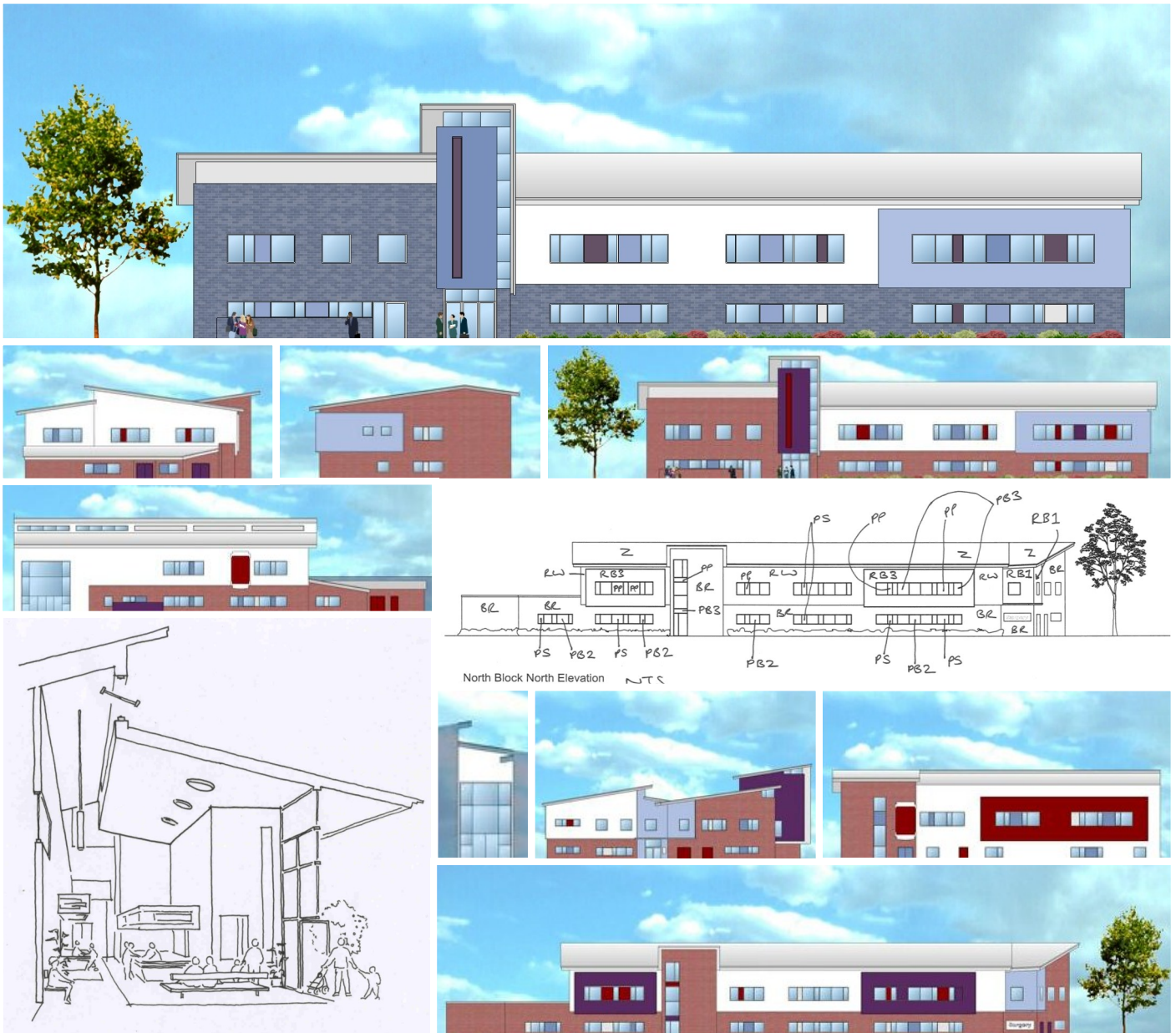


Lawson Street Health Centre, Stockton on Tees



Client

Tees Valley and South Durham NHS Lift

Description

The feasibility scheme provided accommodation for GPs, PCT facilities and retail premises. The design reflected the complex operational requirements, in particular the incorporation of a substance abuse clinic, whilst encouraging cooperation through shared spaces.

Innovations & Added Value

The designed is distinctive but sensitive to its context and location within one of the poorer wards in Stockton on Tees. Security measures were sensitively and unobtrusively introduced into the design so as not to detract from the welcoming appearance.

Status

Completed