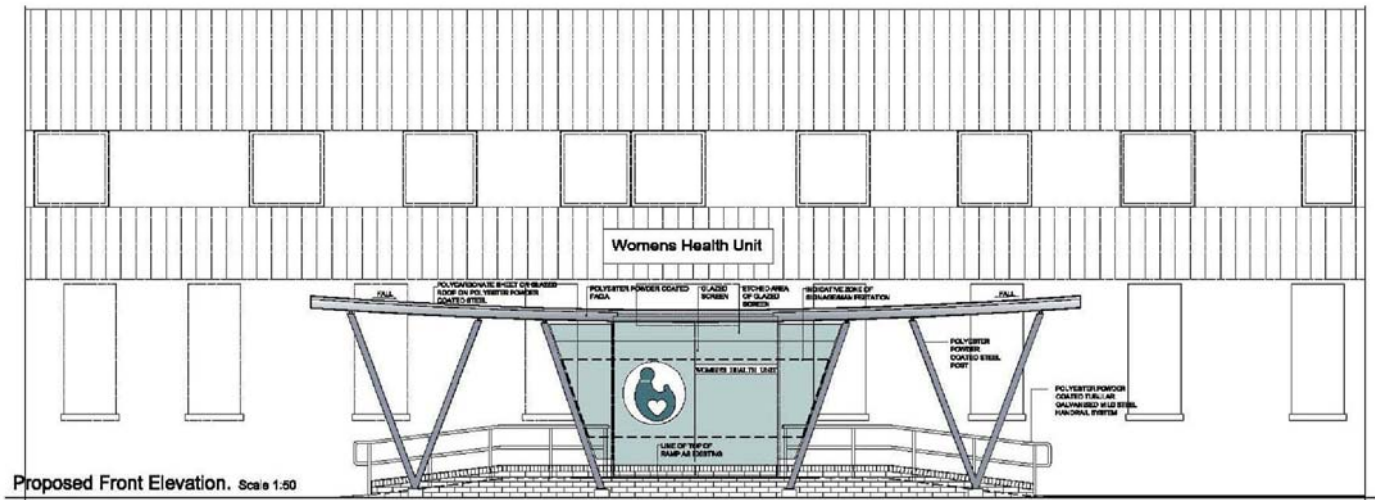


Women's Health Unit, St Helier Hospital



Client

Epsom & St Helier University Hospitals NHS Trust

Description

The Women's Health Unit at St Helier Hospital, Carshalton, is housed in a standalone 3 storey building.

Innovations & Added Value

The project involved full refurbishment of the delivery ward to form a midwifery led unit and the partial refurbishment of a number of other areas including delivery room, theatres, maternity wards, neonatal facilities, a transitional care unit, antenatal clinics, gynaecology facilities, and a new reception and entrance canopy.

Status

Completed