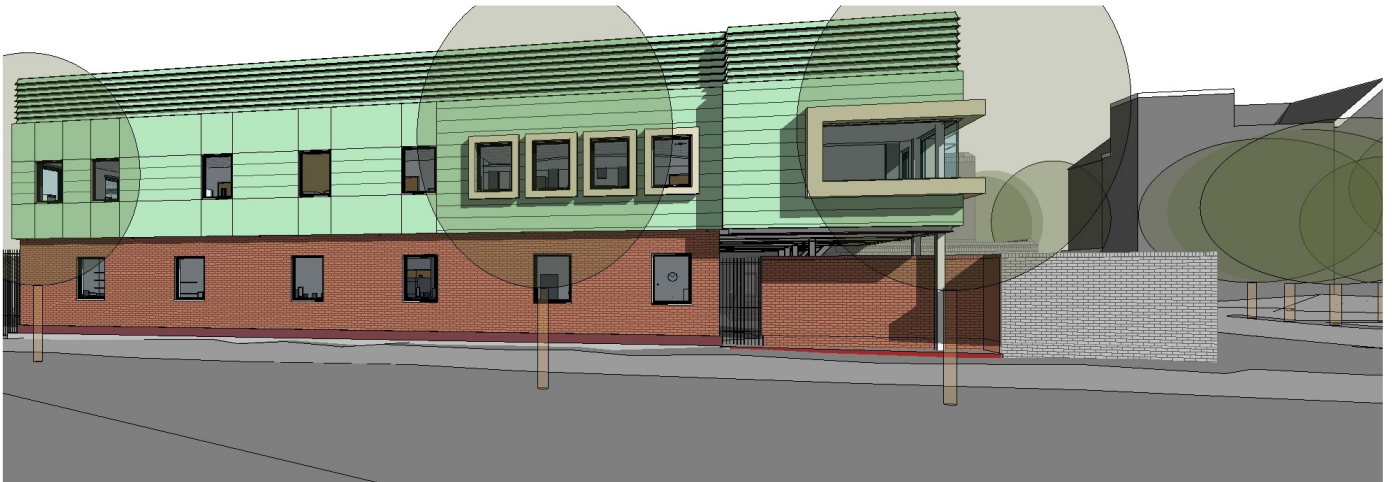


NCHCD, St. Jame's Hospital Dublin



Client

St. James's Hospital, Dublin

Description

The development of the National Centre for Hereditary Coagulation Disorders forms part of the Strategic Plan to provide a vacant site for the new National Paediatric Hospital on the St. James's Campus. Designed in collaboration with Rhatigan Architects the building consists of laboratory space on the ground floor and associated support and administration space together with a new staff canteen and associated cloakroom facilities at first floor.

Innovations & Added Value

Positioned on a prominent and busy corner at the St. James's entrance to the hospital the new facility is located adjacent to the existing Central Pathology Laboratory (CPL) and in close proximity to the LUAS light rail tram system. The building therefore required a sensitive but rational design approach. Existing services infrastructure was located below the building and its inclusion was key to the design strategy. The existing CPL also had to remain operational throughout the construction phase and this was achieved through a detailed phasing plan

Status

On Site.